

# Second Grade Newsletter

## April 12<sup>th</sup> - April 16<sup>th</sup>

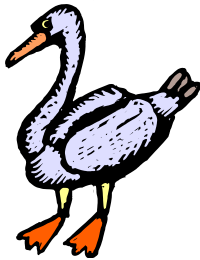
### Reading

***Farfallina and Marcel*** a fiction story by Holly Keller pg. 256-279

**Skills:** reading comprehension, vocabulary, make inferences, using a thesaurus, consonant + le syllables, fluency, illustrations and captions.

**Open response:** What happens to Farfallina when she is in the tree? Give three clues from the story that help you know what happens to her.

**Test Thursday!**



### Reading Vocabulary

***giggled*** – to laugh

***peered*** – look over or around something

***fluttered*** – flapped wings quickly to fly

***snuggled*** – held closely

***recognized*** – someone you know from an earlier time

***vanished*** – no longer able to be seen

**Test Thurs.**



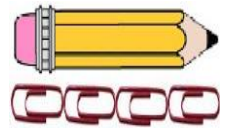
### Spelling/Phonics

Words with /e Syllables

- |            |                                      |
|------------|--------------------------------------|
| 1. lit     | Review Words                         |
| 2. little  | 11. open                             |
| 3. set     | 12. only                             |
| 4. settle  | 13. lady                             |
| 5. rip     | 14-15 (words with a similar pattern) |
| 6. ripple  |                                      |
| 7. pad     |                                      |
| 8. paddle  |                                      |
| 9. middle  | <b>Test Thurs.</b>                   |
| 10. bubble |                                      |

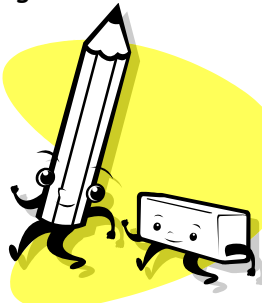


**Math** We will begin Unit 8 *Length in Customary Units*. We will cover measuring with inch models, making a ruler, estimating lengths, measuring with an inch ruler, adding and subtracting in inches, measuring with feet, choosing a tool, and displaying measurement data. **Continue to study those flashcard!! Timed quiz every Friday!**



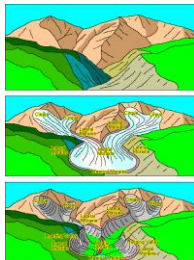
### English

We will **test** Tuesday on Unit 5 *"More About Verbs"*. It will cover irregular verbs, come, run, give, go, do and see, helping verbs, have, had, and has, and adverbs. Study guides are in red folders and they can bring their books home.

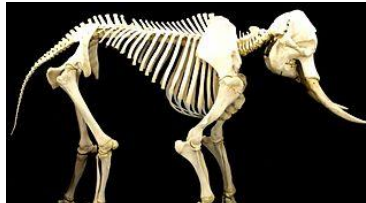


### Science

We will **test** Friday on *Unit C Treasures from Earth*, Chapters 6 and 7.



**Homework:** *The La Brea Tar Pits*



### Things to Remember

- Reading and Spelling tests will be given on Thursday.
- English test Tuesday. Study guides are in red folders.
- Science test Friday. Study guides are in red folders.
- Study those addition flash cards.