

# Second Grade Newsletter

## May 10<sup>th</sup> - May 14<sup>th</sup>

### Reading

**Story:** *Splish! Splash! Animal Baths* an expository text by April Pulley Sayre, pg. 366-389.

**Skills:** vocabulary, reading comprehension, vowel team syllables, compare and contrast, literary elements: setting, characters, and dialogue, review author's purpose.

**Open Response:** What does the author say the cleaner shrimp is like? How does the cleaner shrimp's job help the eel? How does it help the shrimp?



### Reading Vocabulary

beasts - animals other than human beings

handy - to be useful

itches - feelings on your skin that make you want to scratch

nibble - to bite something gently or take small bites of it

preen - to smooth and clear feathers using beaks

puddles - small and shallow pools of water



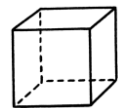
### Spelling/Phonics

#### 1-1-1 Doubling Rule

- |             |             |
|-------------|-------------|
| 1. swim     | 11. sink    |
| 2. swimming | 12. sinking |
| 3. flat     | 13. big     |
| 4. flatten  | 14. bigger  |
| 5. stop     | 15. fewest  |
| 6. stopped  |             |
| 7. drum     |             |
| 8. drummer  |             |
| 9. mix      |             |
| 10. mixer   |             |



**Math-** We will begin Chapter 11 *Geometry and Fractions*. It will cover three-dimensional shapes and the attributes, building three-dimensional shapes, two-dimensional shapes, angles in two-dimensional shapes, sorting shapes, portioning rectangles, equal parts, parts of a whole, and equal shares. **Remember to study those flashcards as well.**



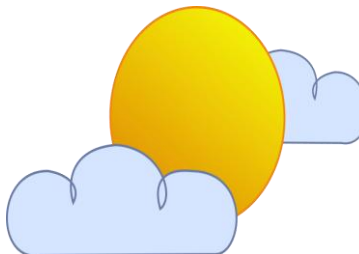
### English

We will **test Friday** on Unit 6 *Usage Wrap Up*. It will cover different types of pronouns, run on sentences, contractions, troublesome homophones, combining sentences, and using commas in a series. Study guides are in red folders and they will have their book as well.



### Science

We will **test Wednesday** on Unit E *Matter and Energy*. Study guides are in red folders and they can bring their books home as well.



### Things to Remember

- Science test is Wednesday, May 12<sup>th</sup>. Study guides are in red folders.
- English test is Friday, May 14<sup>th</sup>. Study guides are in red folders.
- May 18<sup>th</sup> Elementary Event Day
- May 19<sup>th</sup> is an early dismissal day.
- May 27<sup>th</sup> is last day of school.