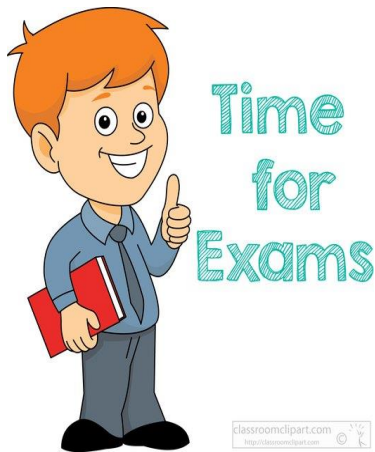


# Second Grade Newsletter

## January 29<sup>th</sup> - February 2<sup>nd</sup>

### Reading

No story this week due to MAP testing. We will review previously taught skills.



### English

We will continue Unit 4 **Adjectives**. It will cover what adjectives are and how they make our descriptive writing more exact. We will cover different types of adjectives such as adjectives for color, number, the senses, comparing adjectives and more exact synonyms.



hot



hotter



hottest



fat



fatter



fattest

### Spelling/Phonics

Phonics First

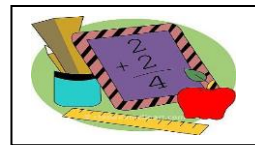
Lesson 4.3-4.4 /ar/, / or/

Lesson 4.8-4.9 /ow/, /ou/

- |              |                |
|--------------|----------------|
| 1. towel     | 10. market     |
| 2. however   | 11. harmless   |
| 3. downtown  | 12. artist     |
| 4. mouth     | 13.-15         |
| 5. counter   | (review words) |
| 6. thousand  |                |
| 7. corner    |                |
| 8. northwest |                |
| 9. order     |                |



**Math** We will begin Unit 5: *Numbers to 1,000*. It will cover place value, composing a hundred, writing three-digit numbers, using expanded form of numbers, comparing numbers, number order and representing numbers in different ways. Please continue to practice those flash cards. There is an addition facts quiz every Friday.



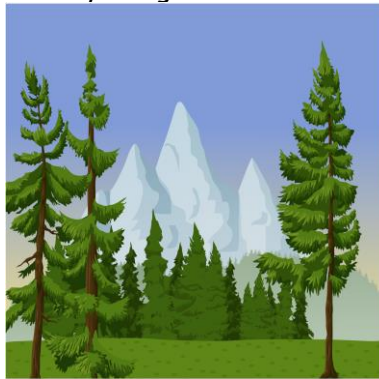
### Handwriting

We will continue to practice lowercase cursive letters. We will be covering formation, size, slant and spacing.



### Science

We will continue Unit A *Plants and Animals*. We will cover living and nonliving things, study plant parts and their functions, plant and animal life cycles, and classify living creatures.



### Things to Remember

- Early dismissal on January 31<sup>st</sup>.
- Valentine orders are due February 9<sup>th</sup>.
- Valentine's Day party is on February 14<sup>th</sup>. Please send \$2.00 for your child's part of the food.
- Parent Teacher Conferences are February 15<sup>th</sup>.