

Second Grade Newsletter

February 22nd -February 26th

Reading

A Harbor Seal Pup Grows Up an expository text, pg. 95-114.

Skills: reading comprehension, vocabulary, review sequencing, inflectional endings, literary elements, similes, and reviewing antonyms.

Open response: Why is it important for Sydney to learn to eat fish? Explain your answer and support it with three details from the article.



Reading Vocabulary

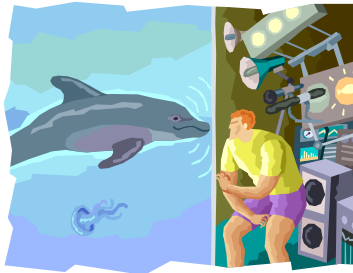
examines – to look at closely
hunger – feels a strong need to eat

mammal – a warm-blooded animal that drinks its mother's milk, and has hair or fur.

normal – happens in a regular or healthy way

rescued – saved from danger

young – at an early time of life



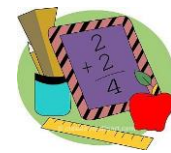
Spelling/Phonics

Words with \oo, ou\

- | | |
|-----------|----------------|
| 1. shook | Review\oddball |
| 2. hook | 11. fruit |
| 3. crook | 12. glue |
| 4. good | 13. below |
| 5. should | 14. city |
| 6. brook | 15. own |
| 7. foot | |
| 8. soot | |
| 9. could | |
| 10. would | |



Math We will continue *Ch. 5 2-Digit Subtraction*. We will cover breaking apart ones and numbers to subtract, model regrouping, record subtraction, rewrite 2-digit subtraction, add to find differences, problem solving, multistep problems, and writing equations. Practice flashcards. There is a quiz every Friday.



English

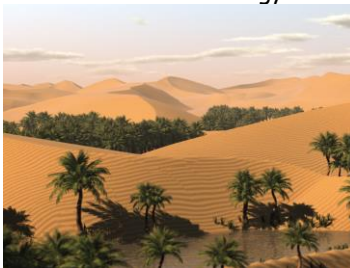
We will continue Unit 4

Adjectives. We will cover what adjectives are and how they make our descriptive writing more exact. We will cover different types of adjectives such adjectives for color, number, the senses, comparing adjectives and more exact synonyms.



Science

We will begin Unit B Ch. 4 and 5. Environments and Energy.



Homework: *Deserts*



Things to Remember

- Early dismissal February 26th.
- Please remember to study the addition facts nightly.
- Read at least 2 library books each week.